

Healthcare Anchor Network

- Our healthcare network has more than 40 health systems; representing more than 600 hospitals, approximately 1/10th of the national total.
- Together, members employ more than 1 million people, purchase over \$60 billion annually, and have over \$150 billion in investment assets.



Higher Education Anchor Mission Initiative

CUMU/TDC Members	33
Total Students	573,624
Total Employees	126,901
Total Procurement	\$6 Billion
Total Size of Investment Portfolio	\$24 Billion
Total Value of Property	\$19 Billion



Anchor Network Initiatives

- Anchor Mission Implementation:
 - Hiring & Workforce
 - Purchasing
 - Investment
- Building the Evidence Base
- Collaborating with Community Stakeholders
- Defining the Organizational Imperative
- Aligning our Work to Advance Advocacy & Policy
- Anchor Philanthropy



ANCHOR MISSION DASHBOARD

COMMUNITY BENEFIT

ECONOMIC DEVELOPMENT



EQUITABLE LOCAL &
MINORITY HIRING

EQUITABLE LOCAL &
MINORITY BUSINESS
PROCUREMENT

VIBRANT ARTS &
CULTURAL
DEVELOPMENT

THRIVING BUSINESS
INCUBATION

AFFORDABLE
HOUSING

SOUND COMMUNITY
INVESTMENT

HEALTH, SAFETY & ENVIRONMENT



HEALTHY COMMUNITY
RESIDENTS

SAFE STREETS &
CAMPUSES

HEALTHY
ENVIRONMENT

COMMUNITY BUILDING & EDUCATION

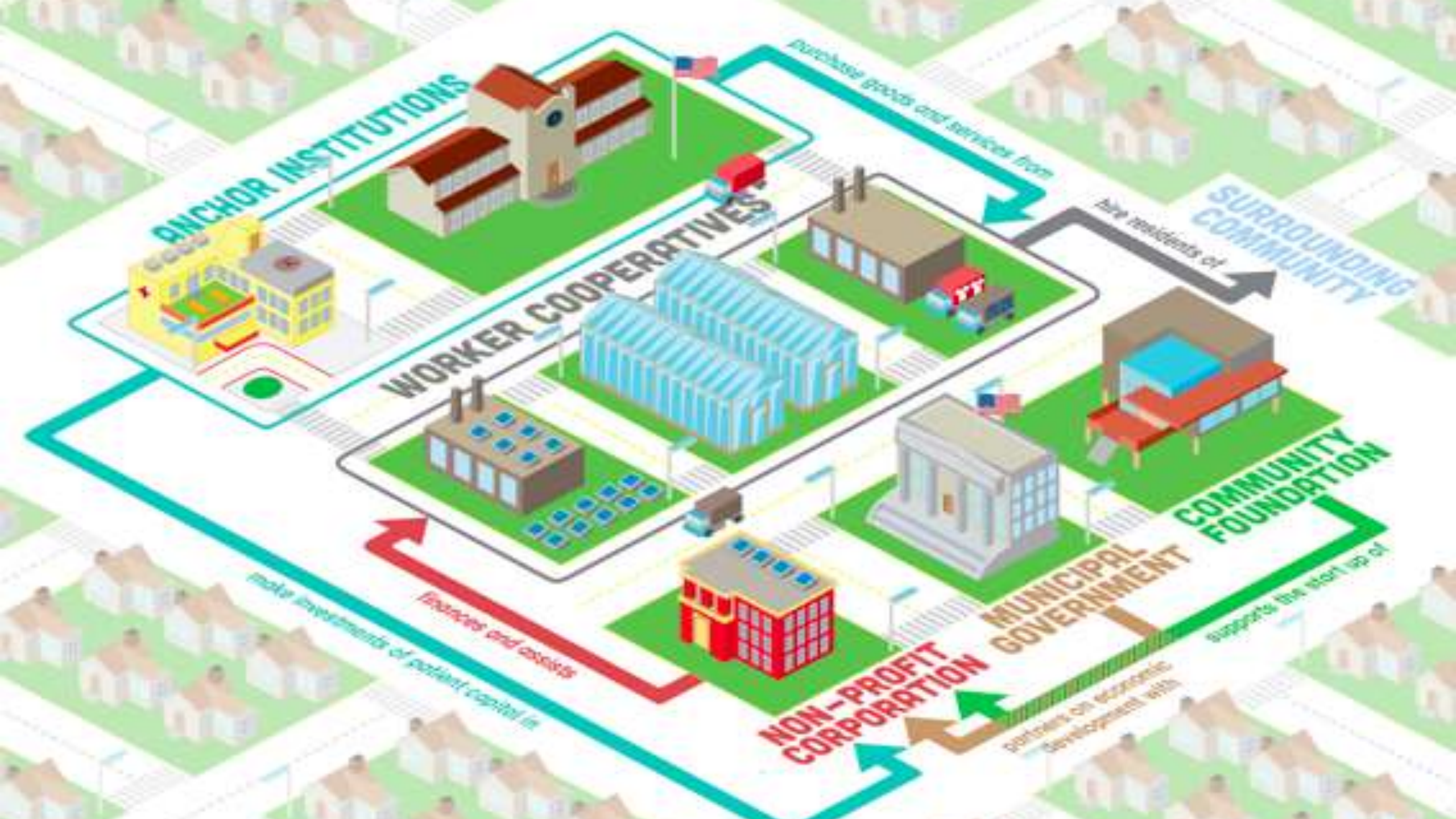


STABLE & EFFECTIVE
LOCAL PARTNERS

FINANCIALLY SECURE
HOUSEHOLDS

EDUCATED YOUTH

<https://anchors.democracycollaborative.org/>



CLEVELAND ANCHOR INSTITUTION PROCUREMENT

\$3 Billion+ Annually

Cleveland Clinic



Cleveland State University



Case Western Reserve University



University Hospital

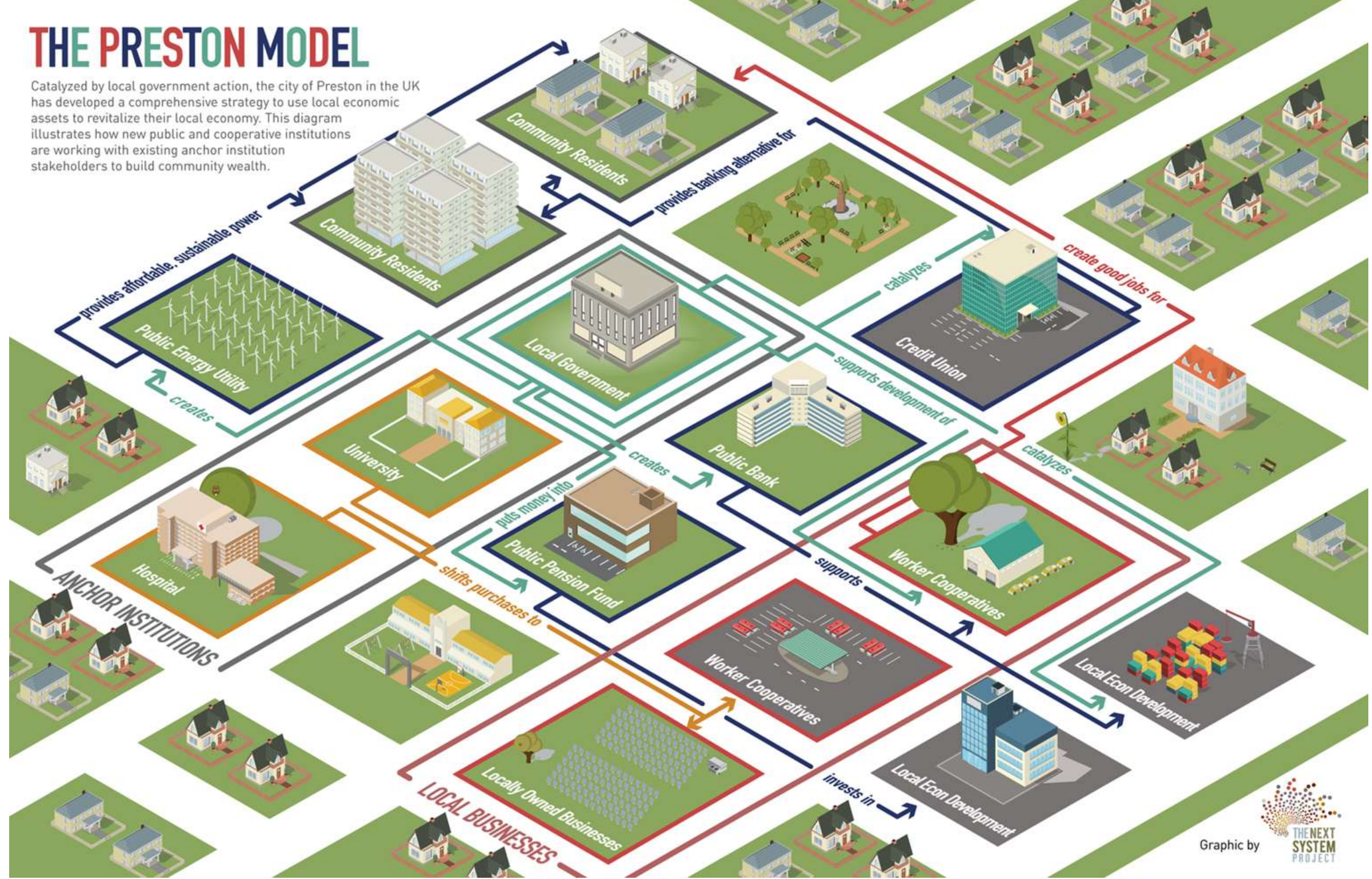
Evergreen Cooperatives: 300 Employees, 60% Owners



Catalyzed by
Cleveland
Foundation,
Democracy
Collaborative,
City of
Cleveland,
Cleveland
State
Univeristy,
University
Hospitals,
Case Western
University,
and the
Cleveland
Clinic.

THE PRESTON MODEL

Catalyzed by local government action, the city of Preston in the UK has developed a comprehensive strategy to use local economic assets to revitalize their local economy. This diagram illustrates how new public and cooperative institutions are working with existing anchor institution stakeholders to build community wealth.



At the Root. . .

UBUNTU

People are people through other people.

Closing reflections. . .

- . *What's your analysis of how your local systems of democracy and economy are working?*
- . *Who are the anchor institutions in your context and how do they contribute to or undermine your community development efforts?*
- . *How does equity show up in your work?*
- . *What role(s) could CDC's play in the effort to shift our political economy from concentrated wealth to community wealth?*

Thank You!

For more information:

www.community-wealth.org

www.DemocracyCollaborative.org

www.thenextsystem.org